

Install drivers with Zadig

When you plug your RTL device in, for the first time, Windows may request a driver, or automatically install a driver from Microsoft - this is OK as it will be replaced in the next few steps using Zadig.

Important: Do not install the software on the CD that comes with the device.

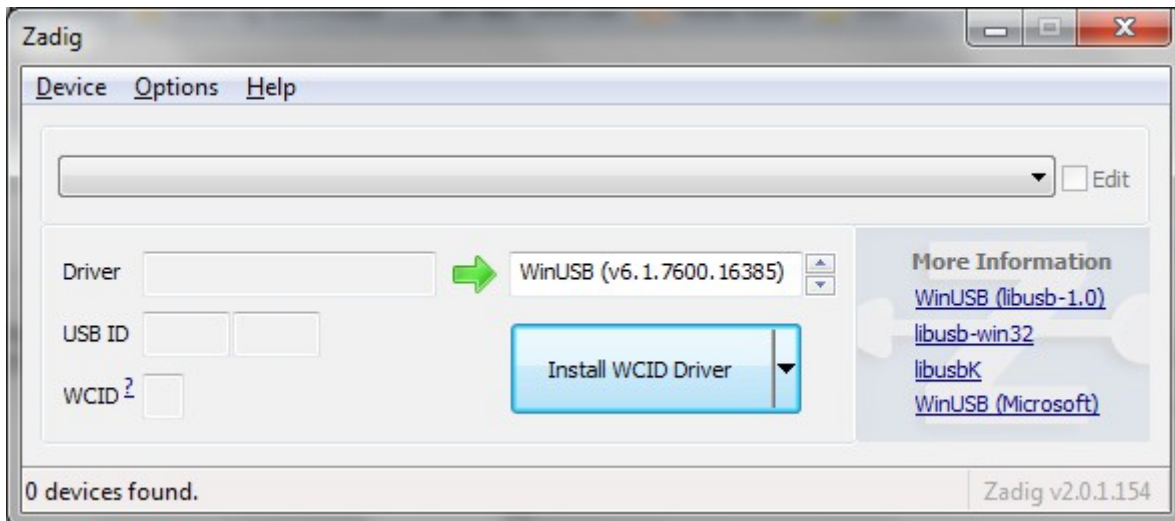
Download the latest version of Zadig from: <http://zadig.akeo.ie>

You will need to use 7zip to extract it from the .7z file: <http://www.7-zip.org>

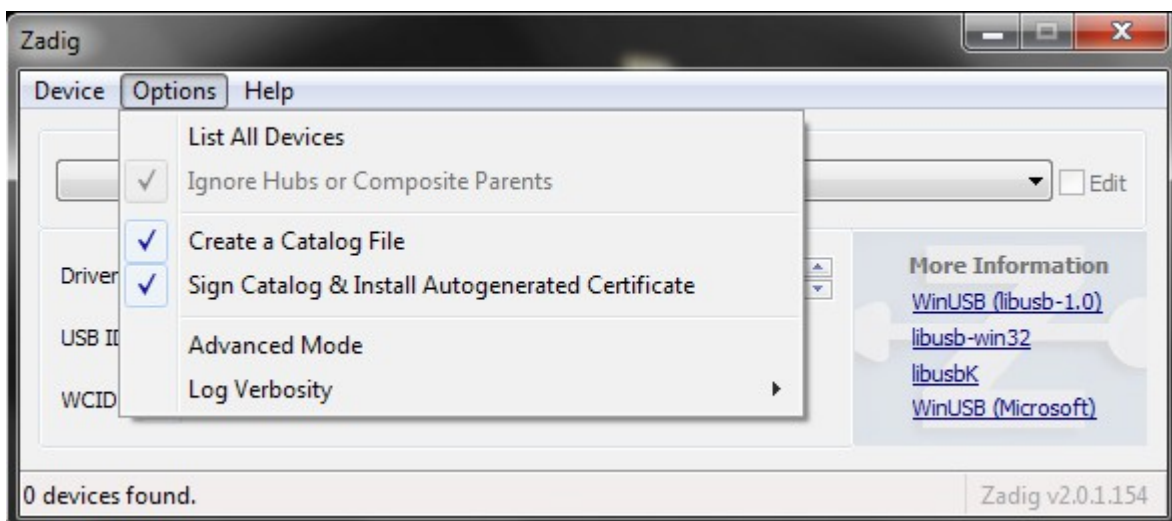
Or you can download the version 2.1.1 Zipped from here:

http://www.theremino.com/wp-content/uploads/files/zadig_2.1.1.zip

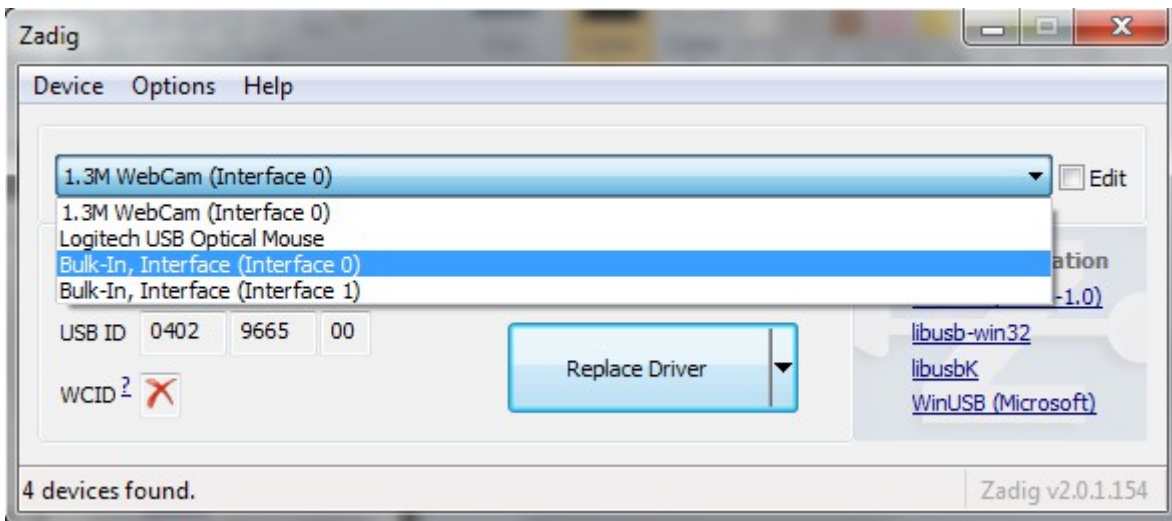
Run the Zadig.exe file and you should see the following with an empty list.



Click on Options and select “List All Devices”.



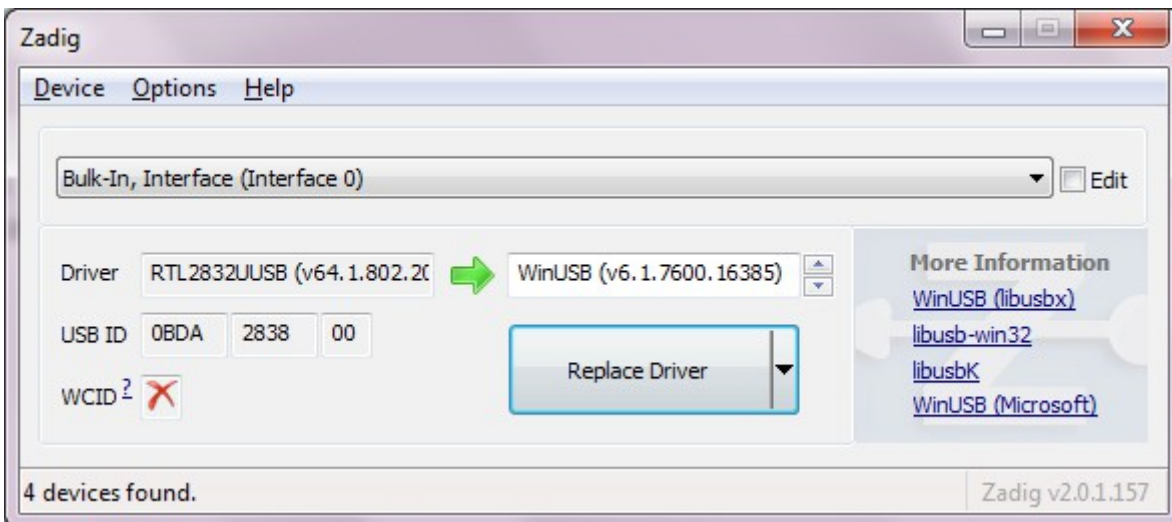
Choose the one that says “Bulk-In, Interface (Interface 0)”. This should be the primary endpoint of your RTL device.



Always take care to NOT replace the driver of another device! If by mistake you replace the mouse driver then the mouse will no longer work (in this case recover using another mouse). Eventually make sure that the USB ID matches the VID/PID in the [Hardware Table](#).

In the box to the right of the green arrow make sure “WinUSB” is chosen (or libusbk).

And finally press the big button marked: “Replace Driver” or “Reinstall Driver”.



Always take care to NOT replace the driver of another device!

After installing the driver, launch "Theremino SDR" and press the "Run" button.

What to do if the driver is not working

Even if ZADIG has been used correctly, in some cases it may happen that the SDR application issues an error message, for example "Driver not working".

Here are some solutions for this problem:

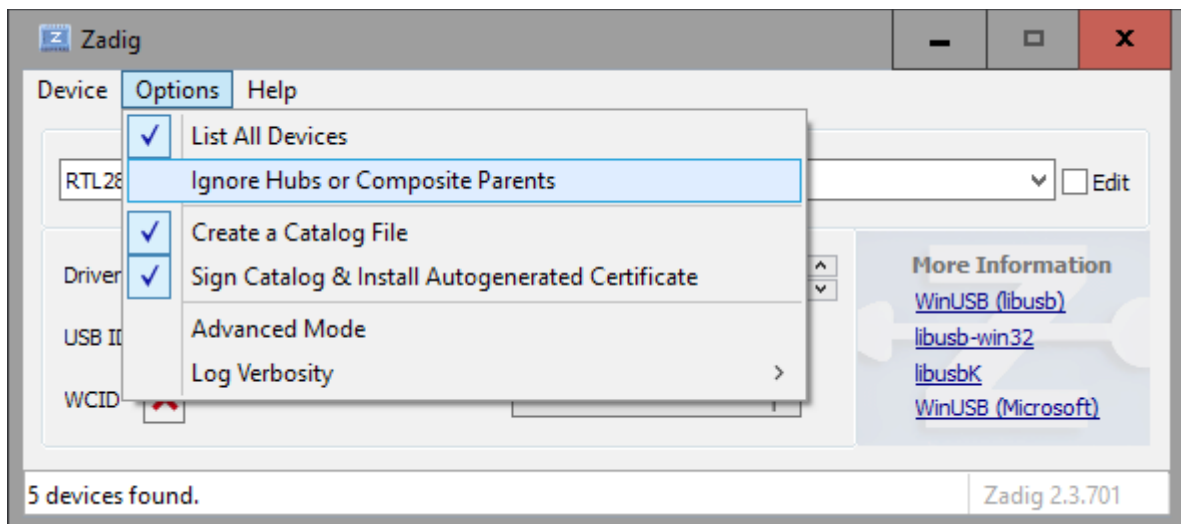
- ◆ With some Windows versions you may need to use again ZADIG if you change the USB port.
- ◆ After some Windows updates you might need to use Zadig again.
- ◆ If the driver is not working you could also try the "WinUSB" and "libusbk" drivers.

Special cases

With some devices the SDR application kept issuing the "Driver not working" message. It happened to us with devices labeled "DVB-T + FM + DAB 820T2 & SDR", but it could also happen with other models.

To recover them we had to proceed as follows:

- ◆ First of all we use the "List all devices" as in the previous cases.
- ◆ Then we disabled the "Ignore Hubs or Composite Parents", as seen in the next image.



- ◆ Finally, we do a "Replace driver" to the RTL and also to any "Parent".

Hardware Table

VID	PID	tuner	device name
0x0bda	0x2832	all of them	Generic RTL2832U (e.g. hama nano)
0x0bda	0x2838	E4000	ezcap USB 2.0 DVB-T/DAB/FM dongle
0x0ccd	0x00a9	FC0012	Terratec Cinergy T Stick Black (rev 1)
0x0ccd	0x00b3	FC0013	Terratec NOXON DAB/DAB+ USB dongle (rev 1)
0x0ccd	0x00d3	E4000	Terratec Cinergy T Stick RC (Rev.3)
0x0ccd	0x00e0	E4000	Terratec NOXON DAB/DAB+ USB dongle (rev 2)
0x185b	0x0620	E4000	Compro Videomate U620F
0x185b	0x0650	E4000	Compro Videomate U650F
0x1f4d	0xb803	FC0012	GTek T803
0x1f4d	0xc803	FC0012	Lifeview LV5TDeluxe
0x1b80	0xd3a4	FC0013	Twintech UT-40
0x1d19	0x1101	FC2580	Dexatek DK DVB-T Dongle (Logilink VG0002A)
0x1d19	0x1102	?	Dexatek DK DVB-T Dongle (MSI DigiVox? mini II V3.0)
0x1d19	0x1103	FC2580	Dexatek Technology Ltd. DK 5217 DVB-T Dongle
0x0458	0x707f	?	Genius TVGo DVB-T03 USB dongle (Ver. B)
0xd393	FC0012	GIGABYTE	GT-U7300
0x1b80	0xd394	?	DIKOM USB-DVBT HD
0x1b80	0xd395	FC0012	Peak 102569AGPK
0x1b80	0xd39d	FC0012	SVEON STV20 DVB-T USB & FM